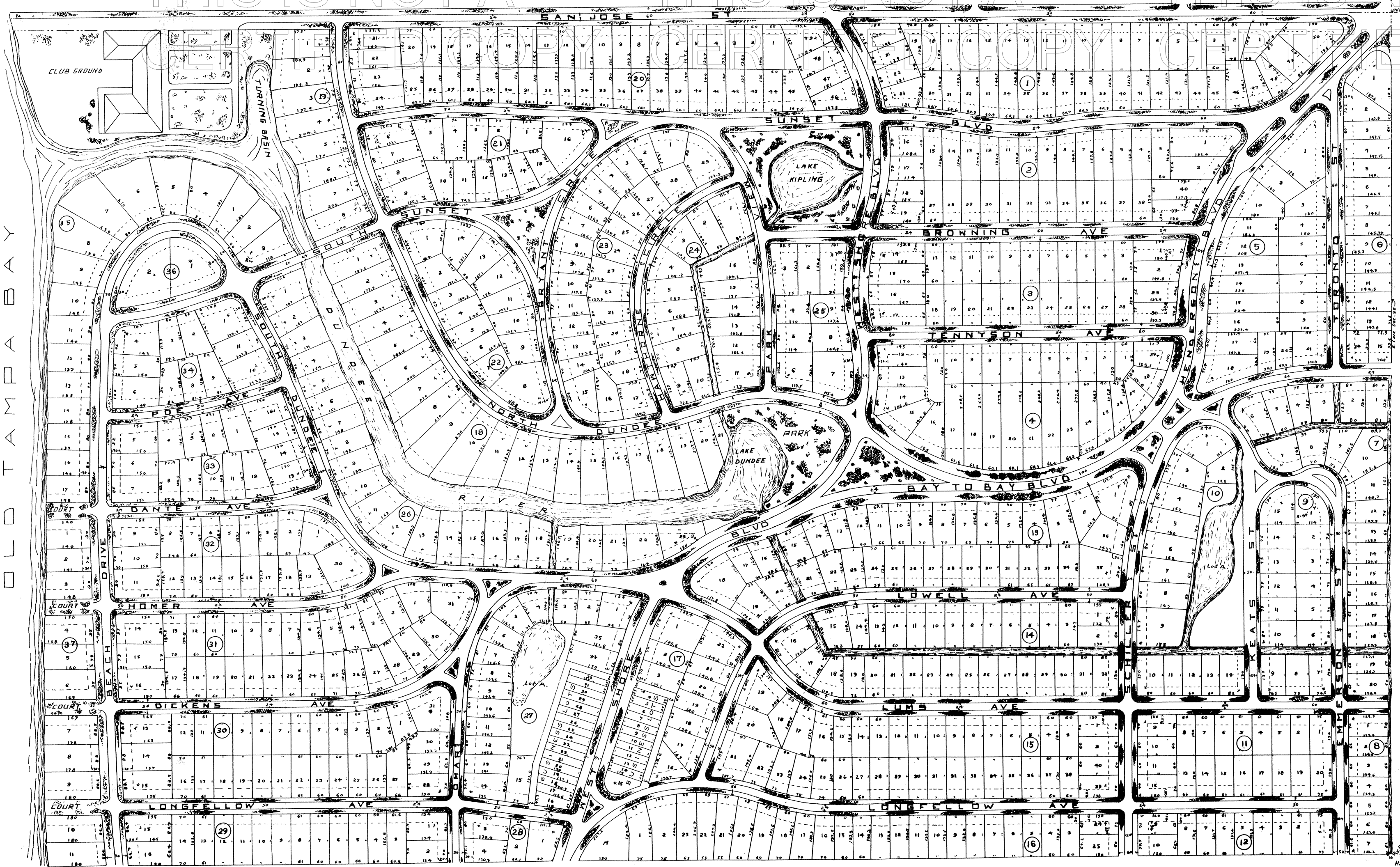


THIS IS NOT A CERTIFIED COPY THIS IS NOT A CERTIFIED COPY THIS IS NOT A CERTIFIED COPY



**FINAL
LOT AND BLOCK PLAN
SUNSET PARK
HILLSBOROUGH COUNTY FLA**
BEING A SECOND RESUBDIVISION OF ALL OF THE NE
QUARTER AND GOVT LOT 1 SEC 32 TWP 29 S RANGE 10E

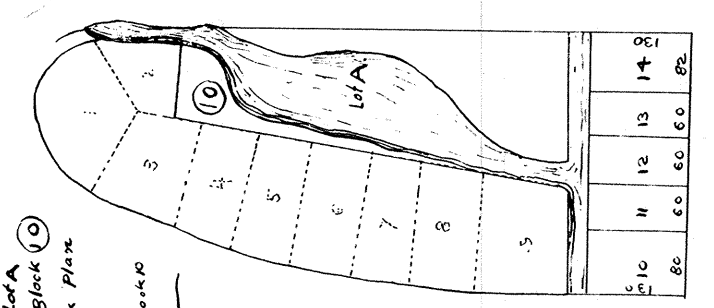
NOTES

The form of streets, avenues, trails, circles or other places laid out on this plan as public highways and in all rivers, lakes, ponds, or other bodies of water, and of their territory reserved for park purposes and in all riparian rights to here in and hereby reserved in the Sunset Park Co. and its assigns and an easement is given only for public highway purposes, expressly reserving and retaining in the Sunset Park Co. and its assigns all rights to use said streets, water courses and parks for street cars, electric lights, water, sewer or other similar purposes, for use of the Sunset Park Co. and its assigns shall hold the use of said streets, water courses and parks in each lot to be between the side line and a line 5 feet from and parallel to said side line and running from front to rear of said lot, and the portion of the lot between the rear line of lot and a line 5 feet from and parallel to said rear line of lot, between said side line and a line 5 feet from and parallel to said rear line of lot, shall be reserved to the Sunset Park Co. and its assigns for the purpose of installing water, sewer, electric lights, telephones or other utility conduits, but none shall be there to become a public highway for travel with least easement of the owner. A building setback line of 30 feet is to be adhered to on all residential lots except where shown otherwise.

McELROY ENGINEERING CO
JULY 1924 TAMPA FLA
SCALE 1"=100' MAP REDUCED IN SCALE

FILED BY
SUNSET PARK CO
Richard A. Clerk, Sec.

Filed for record
July 23rd 1924
and the Record Verified
W.K. Watkins Ch. O. O.
By Mary Martin-Bygones, Sec.



STATE OF FLORIDA
COUNTY OF HILLSBOROUGH
THIS IS TO CERTIFY THAT THIS PLAN IS A TRUE AND CORRECT COPY THAT HAS BEEN PHOTOGRAPHICALLY RE-CREATED FROM THE ORIGINAL PLAN OR TRACING THEREOF RECORDED BY THE CLERK OF CIRCUIT COURT OF HILLSBOROUGH COUNTY, FLORIDA.
RECORD VERIFIED
WITNESS MY HAND AND OFFICIAL SEAL THIS
10 DAY OF July 1924
RICHARD A. CLERK
BY *Richard A. Clerk* DEPUTY CLERK



RESOLUTION FILED
DATE: 2-20-2001
OR BK 10623 PG 503
BY *Cynthia Rice*
DEPUTY CLERK

RESOLUTION FILED
DATE: 8-24-07
OR BK 18058 PG 431
BY *Richard A. Clerk*
DEPUTY CLERK

RESOLUTION FILED
DATE: 8-13-07
OR BK 18026 PG 1166
BY *Richard A. Clerk*
DEPUTY CLERK

RESOLUTION FILED
DATE: 8-13-07
OR BK 18026 PG 1167
BY *Richard A. Clerk*
DEPUTY CLERK

Sub Plan showing lots 1-36 of FINAL LOT AND BLOCK PLAN of SUNSET PARK
Filed July 23rd 1924 and Recorded in Hillsborough County FL
By *Richard A. Clerk*
Deputy Clerk