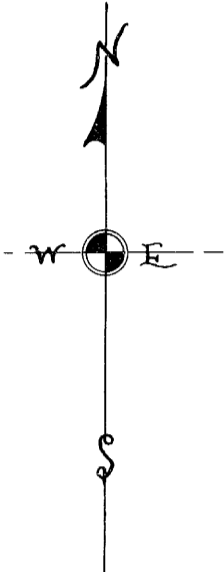


THIS IS NOT A CERTIFIED COPY THIS IS NOT A CERTIFIED COPY THIS IS NOT A CERTIFIED COPY

BEACH PARK

UNIT NO 4

Filed for record Feb 16-1925
 And the Record Certified by E.W.
 W.A. Giddens, Clerk of C.
 W. Kelly, Recorder, D.C.
 Recorded in Plat Book
 No. 1 page 152



OFFICE OF
 FLORIDA LANDSCAPE ENG'G
 210 CAMPBELL BLDG TAMPA, FLA.

Scale 1" = 60 feet

For the purpose of this plat and map the bearing of the center line of West Shore Boulevard is assumed as north.

The lots in this plat, along with other lots in this subdivision, are hereby reserved to the Beach Park Co. a corporation organized under the laws of the State of Florida, and its successors and assigns. For street lighting, water, sewer, telephone, gas, and other utility lines, the Beach Park Co. is authorized to lay out, install, maintain, and use the same.

On this 13th day of July 1925 before me personally appeared the Beach Park Co. a corporation organized under the laws of the State of Florida, and its authorized officers and acknowledged that it executed the foregoing instrument.

In testimony whereof I hereunto set my hand and official seal this 13th day of July 1925.

Notary Public
 my commission expires
 Date April 27 1925

LEGEND

- Building restriction line
- Concrete monuments
- Legal line of owner
- 20' set back
- Center line of street

I hereby certify that all bearings and distances are correct as shown, and that all monuments are in place on the ground as indicated on this map.

H.C. [Signature] Surveyor

STATE OF FLORIDA
 COUNTY OF HILLSBOROUGH

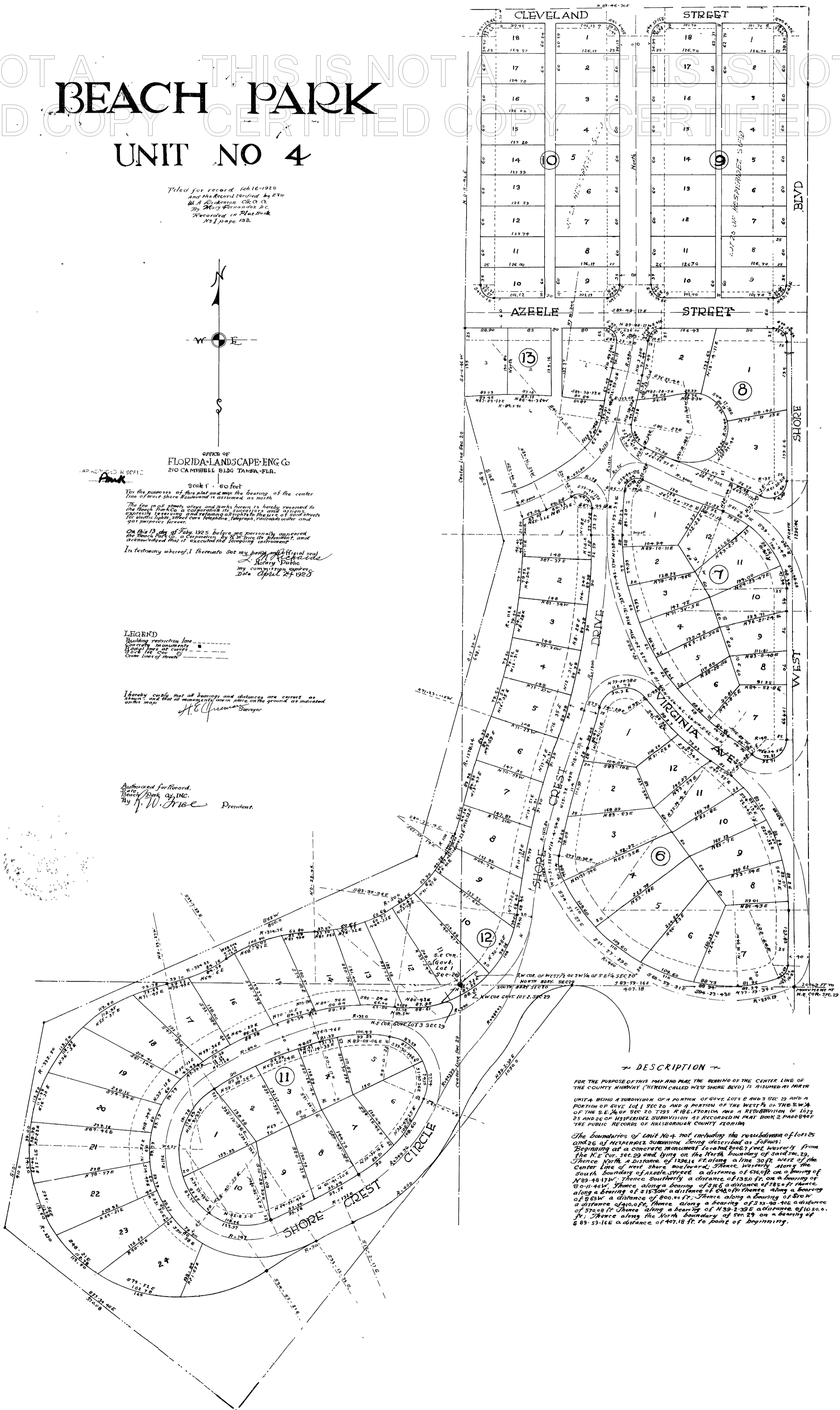
THIS IS TO CERTIFY THAT THIS PLAT IS A TRUE AND CORRECT COPY THAT HAS BEEN PHOTOGRAPHICALLY REPRODUCED FROM THE ORIGINAL PLAT OR RECORD THEREOF RECORDED BY THE CLERK OF COUNTY OF HILLSBOROUGH COUNTY, FLORIDA.

RECORD VERIFIED

WITNESS MY HAND AND OFFICIAL SEAL THIS
 10 DAY OF July 1927

RICHARD A. CLERK
 By [Signature] Notary Public, FLA.

Authorized for Record
 Beach Park Co., Inc.
 By [Signature] President



DESCRIPTION

FOR THE PURPOSE OF THIS MAP AND MAP THE BEARING OF THE CENTER LINE OF THE COUNTY HIGHWAY (HEREIN CALLED WEST SHORE BLVD) IS ASSUMED AS NORTH

UNIT 4 BEING A SUBDIVISION OF A PORTION OF GOVT LOTS 6 AND 5 SEC 29 AND A PORTION OF GOVT LOT 1 SEC 20 AND A PORTION OF THE WEST 1/4 OF THE SW 1/4 OF THE S.E. 1/4 OF SEC 20 T29S R18E FLORIDA AND A RESUBDIVISION OF LOTS 23 AND 24 OF HILLSBOROUGH SUBDIVISION AS RECORDED IN PLAT BOOK 2 PAGE 84 OF THE PUBLIC RECORDS OF HILLSBOROUGH COUNTY, FLORIDA

The boundaries of Unit No. 4, not including the resubdivision of lots 25 and 26 of Hillsborough Subdivision being described as follows:

Beginning at a concrete monument located 896.7 feet westerly from the N.E. Cor. Sec. 29 and lying on the North boundary of Govt Lot 23, thence north a distance of 128.6 feet along a line 30 ft. west of the center line of West Shore Boulevard, thence westerly along the South boundary of Govt Lot 23 a distance of 636.0 ft. on a bearing of 80-11-14W, thence southerly a distance of 130.0 ft. on a bearing of 80-11-14W, thence along a bearing of 316 a distance of 182.4 ft. thence along a bearing of 418 SW a distance of 640.0 ft. thence along a bearing of 576.8 ft. thence along a bearing of 830-2-29E a distance of 1050.0 ft. thence along the North boundary of Sec. 29 on a bearing of 89-53-16E a distance of 497.18 ft. to point of beginning.

Book | Pg. 152