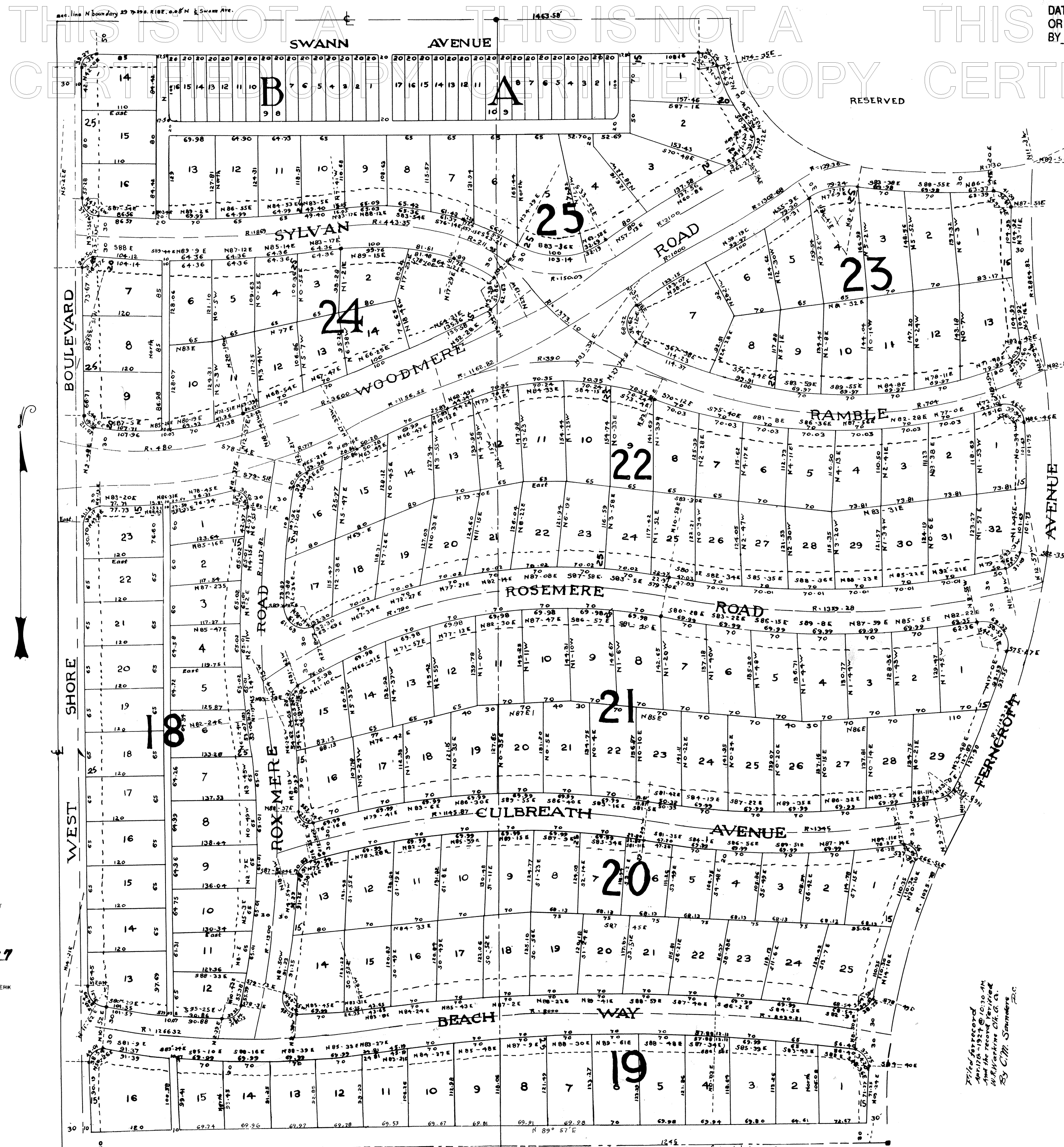


BEACH PARK

ORDINANCE FILED

DATE: 11-17-05
 OR BK: 15770 PG 1566
 BY: Paul W. Trice
 DEPUTY CLERK



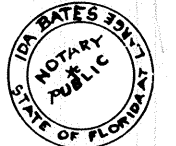
Unit No 2 being a subdivision of that part of the east half of government lot 2 and the western part of government lot 1 lying north of a line parallel to, and 1000 ft north of, the south boundary of government lots 123; Sec. 29, 1p, 29 South Range 18 East, Florida.

For the purposes of this plat and map, the bearing of the center line of West Shore Boulevard is assumed as North.

The fee in all streets and alleys herein is hereby reserved to the Beach Park Company, a corporation its successors and assigns, expressly reserving and retaining all rights to the use of said streets for electric, lights, street cars, telephone telegraph, railroads, water and gas purposes forever.

On this day of 1924, before me, personally appeared the Beach Park Co., a corporation by R. W. Trice, its President, and acknowledged that it executed the foregoing instrument, in testimony whereof I thereunto set my hand and official seal this date aforesaid.

Iola Bates
 Notary Public
 My commission expires
 Dec 27, 1927.



Building restriction line
 Concrete monuments
 Government lot lines
 Government lot Corner
 Radial lines of curves

I hereby certify that all bearings and distances are correct as shown, and that all monuments are in place on the ground as indicated on this map.
Henry C. Freeman
 Surveyor.

Authorized for Record,
 Date
 BEACH PARK CO. INC.
 By: R. W. Trice
 President

STATE OF FLORIDA
 COUNTY OF HILLSBOROUGH
 THIS IS TO CERTIFY THAT THIS PLAT IS A TRUE AND CORRECT COPY THAT HAS BEEN PHOTOGRAPHICALLY RE-CREATED FROM THE ORIGINAL PLAT OR TRACING THEREOF RECORDED BY THE CLERK OF CIRCUIT COURT OF HILLSBOROUGH COUNTY, FLORIDA.

RECORD VERIFIED
 WITNESS MY HAND AND OFFICIAL SEAL THIS
10 DAY OF July 19 27
 RICHARD AKE, CLERK
 By: Rudolph M. Kane DEPUTY CLERK



Office of
 Florida Land & Engineering Co
 Tampa, Florida.
 Scale 1" = 60'
 MAP REDUCED IN SCALE
AMK

South Property Line parallel to 4,100' North of the South Boundary of Govt Lots 1, 2, 13.